

MID WEST ECONOMIC AND RESOURCES SUMMIT

PROGRESS IN PARTNERSHIP

**JOHN HACKETT
GENERAL MANAGER
INDUSTRIAL**

AUGUST 2011

Who is LandCorp?

LandCorp is Western Australia's government land development agency, acting commercially to identify, design and implement major land, tourism and infrastructure projects which have a lasting and positive impact for Western Australians



LandCorp in the Mid West

- Oakajee Industrial Estate
- Narngulu Industrial Estate
- Batavia Coast Marina
- Bluff Point Project
- RDAP
- And many others



The Mid West Region: a priority for Government

“Oakajee is the most important development project for WA, benefiting Geraldton and other Midwest centres and providing thousands of jobs for people in WA's south.”

Colin Barnett, Premier of Western Australia, June 2011

“More than \$69.3 million in infrastructure investment will support the Mid-West community and help build the region.”

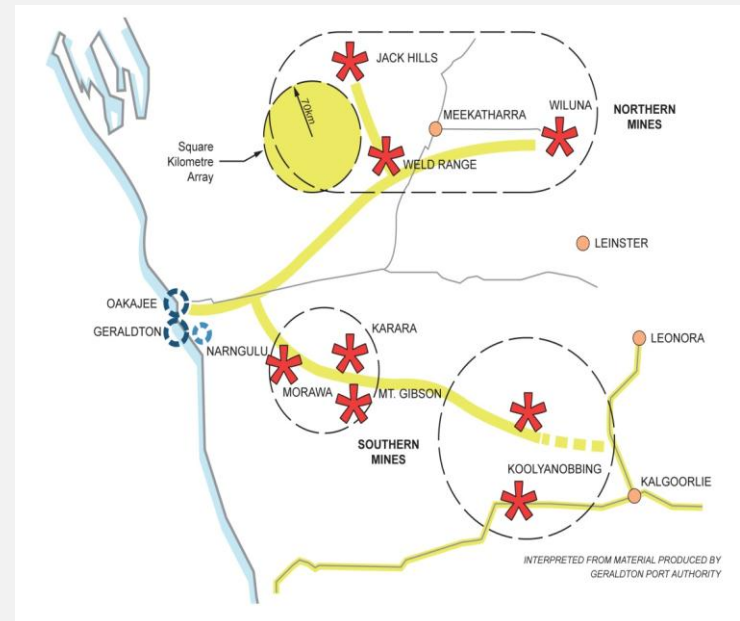
Christian Porter, State Treasurer, May 2011

“The Mid-West region is becoming an increasingly more attractive place to live, work and invest - it boasts a diverse economy underpinned by mining, agriculture, fisheries and tourism.”

John Day, Minister for Planning, June 2011

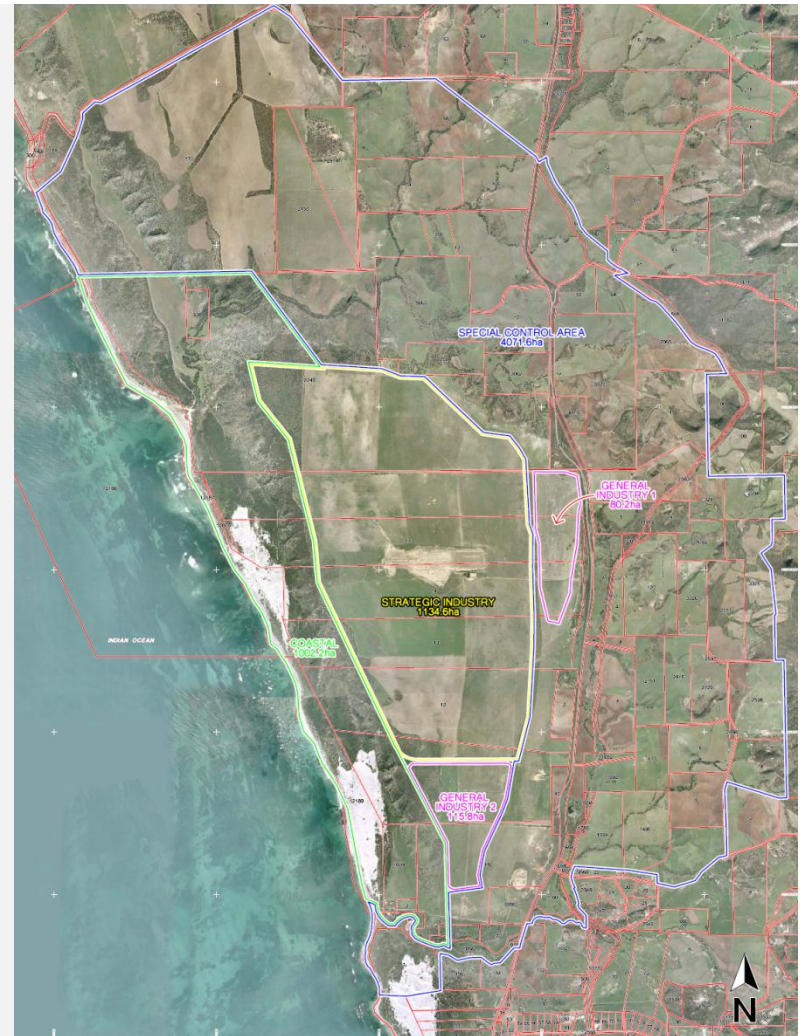
Oakajee Mid West Development Project

- Oakajee Project includes the Port, Rail, Industrial Estate and Oakajee-Narngulu Infrastructure Corridor.
- The Department of State Development is the lead agency responsible for coordinating the project.
- LandCorp is responsible for the Oakajee Industrial Estate.



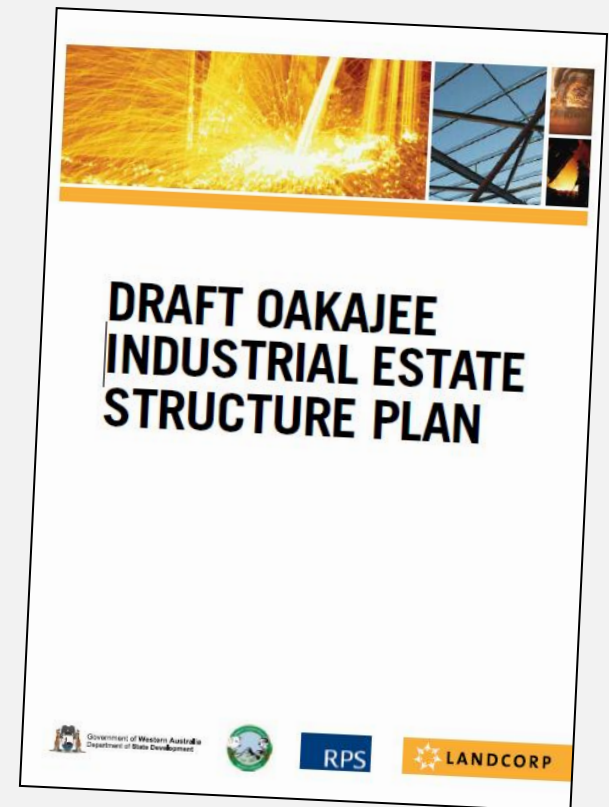
Oakajee: LandCorp's Role

- LandCorp is the land owner, planner, developer and estate manager of the Oakajee Industrial Estate.
- Responsible for preparation of the Oakajee Industrial Estate Structure Plan which will guide the long-term development of the estate.



Oakajee – Technical Reports

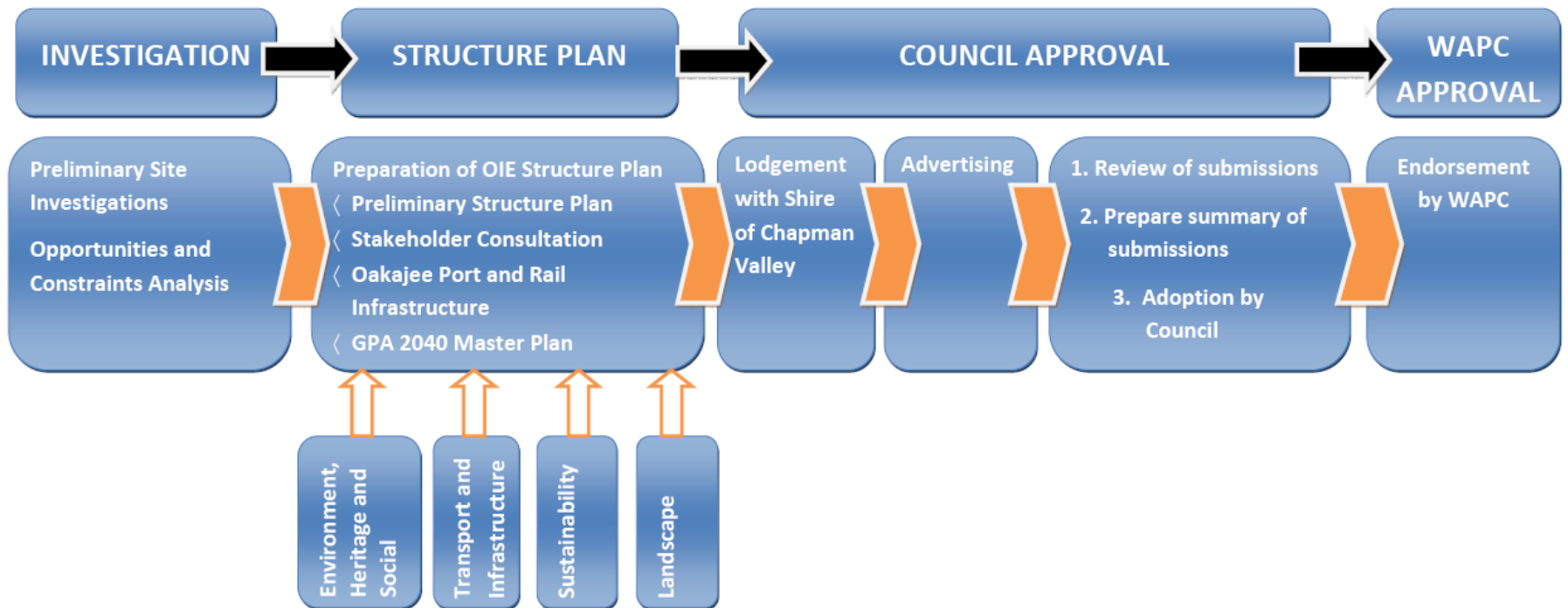
- Sustainability Report
- Environmental Review Report
- Industrial Ecology Strategy
- Integrated Transport Strategy
- Landscape Report
- European Heritage Reports
- Aboriginal Heritage Management Plan
- UXO Contamination Assessment
- Engineering Services Report
- District Water Management Strategy



Oakajee - Consultation

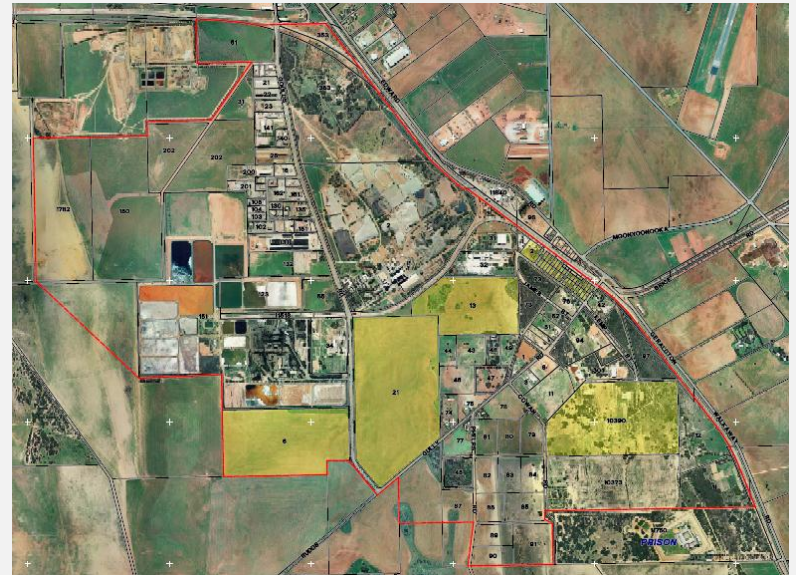
- Shire of Chapman Valley and the City of Geraldton-Greenough.
- Geraldton Port Authority, Main Roads WA, Department of Environment & Conservation, Environmental Protection Authority, Mid West Development Commission, Department of Planning, Department of Transport, Public Transport Authority, Department of Health.
- Western Power, Water Corporation, Dampier Bunbury Pipeline, Telstra.
- Mid West Chamber of Commerce and Industry.
- Iron Ore Alliance.
- Park Falls Residents Association and Drummonds Cove Progress Association.
- Amangu, Naaaguja and Wadjarri Indigenous Groups.

Oakajee - Next Steps



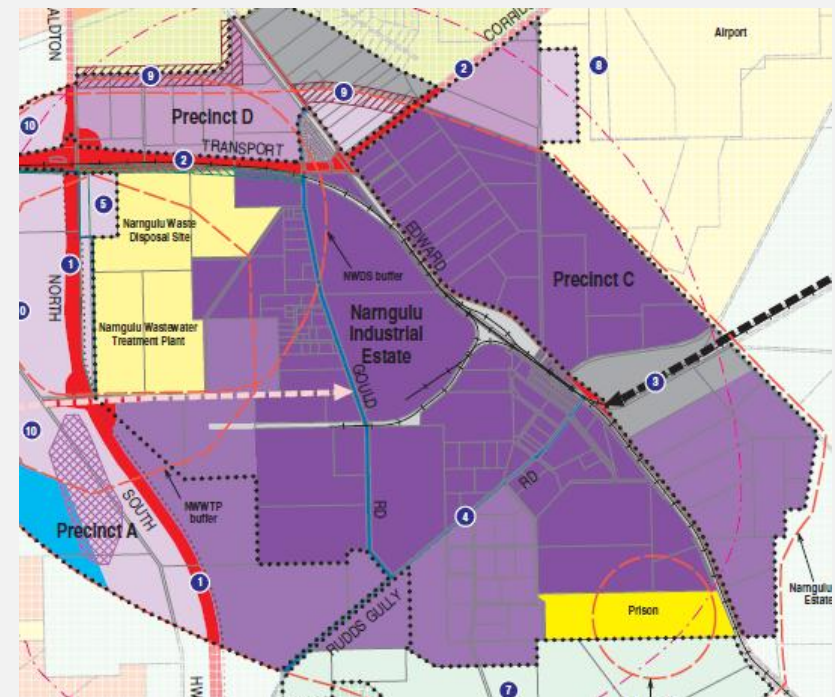
Narngulu Industrial Estate

- Located approximately 12km southeast of the Geraldton CBD
- Strategically located close to Airport, Southern Transport Corridor, proposed North-South Highway and Oakajee-Narngulu Infrastructure Corridor
- LandCorp owns 185ha of vacant land within the NIE



Narngulu Industrial Estate: development opportunities

- Able to meet temporary needs of industry through lease agreements
- Can meet demand for permanent industrial uses providing larger lots over 1ha
- Will complement the provision of land at the Oakajee Industrial Estate



Batavia Coast Marina – enhancing Geraldton’s status as a regional centre

- Linking the waterfront to the heart of the city
- Stage 1 - LandCorp as project manager on behalf of Steering Committee
- Project proponent is Mid-West Development Commission
- Complemented by City of Geraldton’s Foreshore Redevelopment Project enabling Stage 2



Batavia Coast Marina – enhancing Geraldton’s status as a regional centre

- Stage 2 comprises 5.7ha made up of Crown Land titles
- Medium and high density residential, public parks, mixed use, commercial and tourism sites
- Currently working jointly to review structure plan



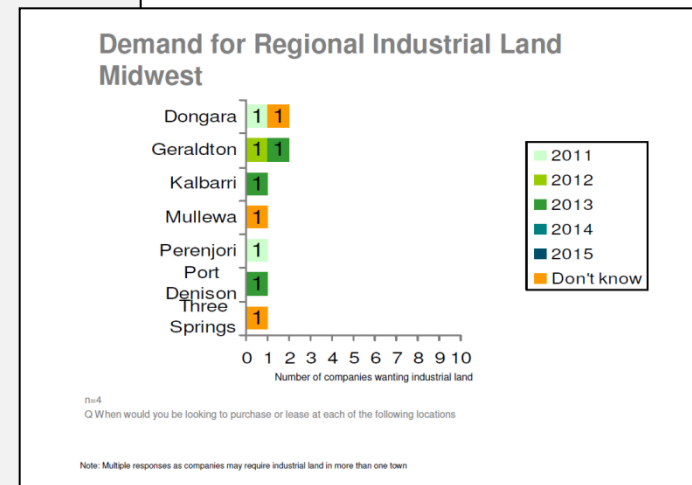
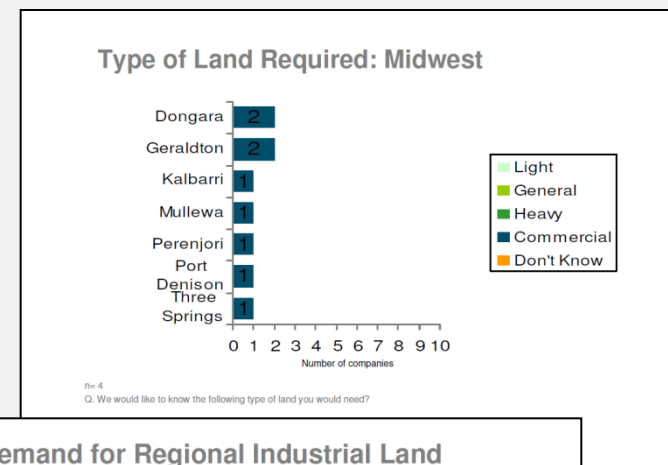
High quality homes at Bluff Point

- 8.4ha undeveloped site
- Close to ocean, shops and CBD
- Generous Public Open Space
- 100 new homes
- Project Partner PRM Property Holdings



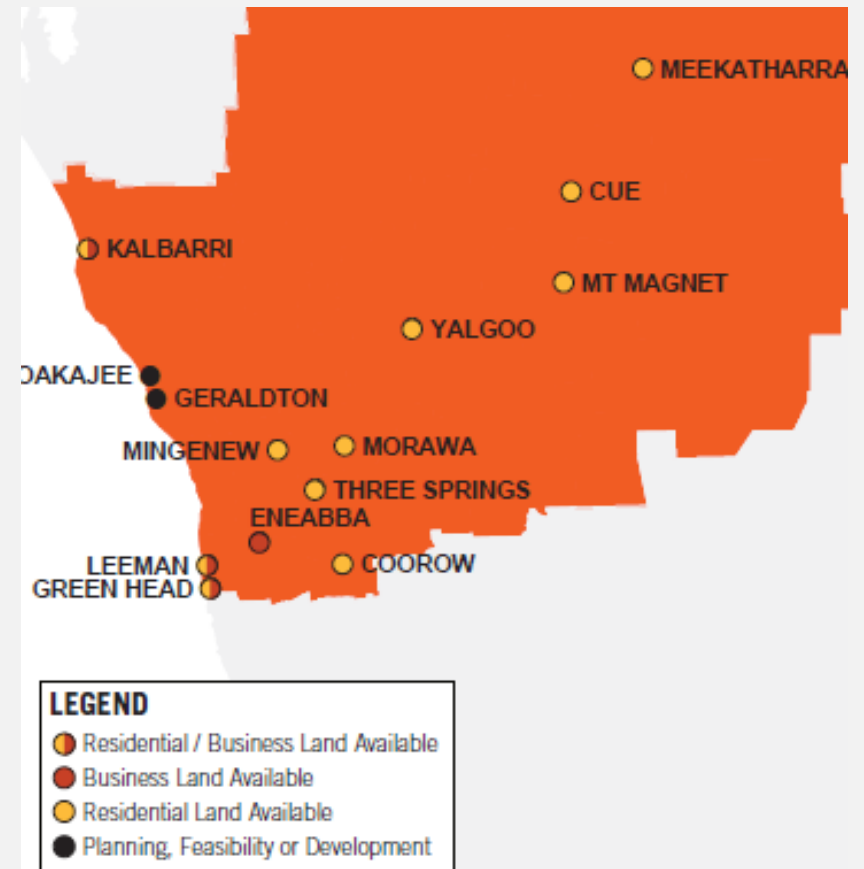
Regional Land Survey

- Regional Land Survey conducted online last November
- Insight into industry and business requirements in regional WA
- Demand for industrial land was spread across Mid West
- High demand for commercial land in major towns



Regional Development Assistance Program

- Facilitate delivery of serviced residential, industrial and commercial land
- Projects range from small lots to substantial subdivisions and tourism
- Projects not viable to private sector developers



Progress through Partnership in the Mid West

- Rapid mining export growth positions the region generating new growth and opportunities for Mid West communities
- Population of nearly 54,000 and growing
- LandCorp's challenge to meet the region's present and future land development needs
- Strong and productive partnerships realising the State Government's ambitions for the Mid West.
- These partnerships will include working with Mid West Development Commission and Department of Regional Development and Lands to deliver the Minister's new priority, SuperTowns

Thank you.